

# WaveCart 4.0

---

Broadcast Software International  
Copyright 1999-2007 – All Rights Reserved

Sales  
Broadcast Software International  
503 East 11<sup>th</sup> Avenue  
Eugene, Oregon 97401 USA  
(888) 274-8721  
Fax: 541-338-8656  
sales@bsiusa.com

Technical Support Center (6am to 6pm Pacific)  
<http://support.bsiusa.com>

Validation Codes (8am to 5pm Pacific)  
<http://www.bsiusa.com/codes>

Internet  
<http://www.bsiusa.com>

February 2007.  
Manual Version 4.0.1

Customer ID / BSI Invoice Number: \_\_\_\_\_

# Table of contents

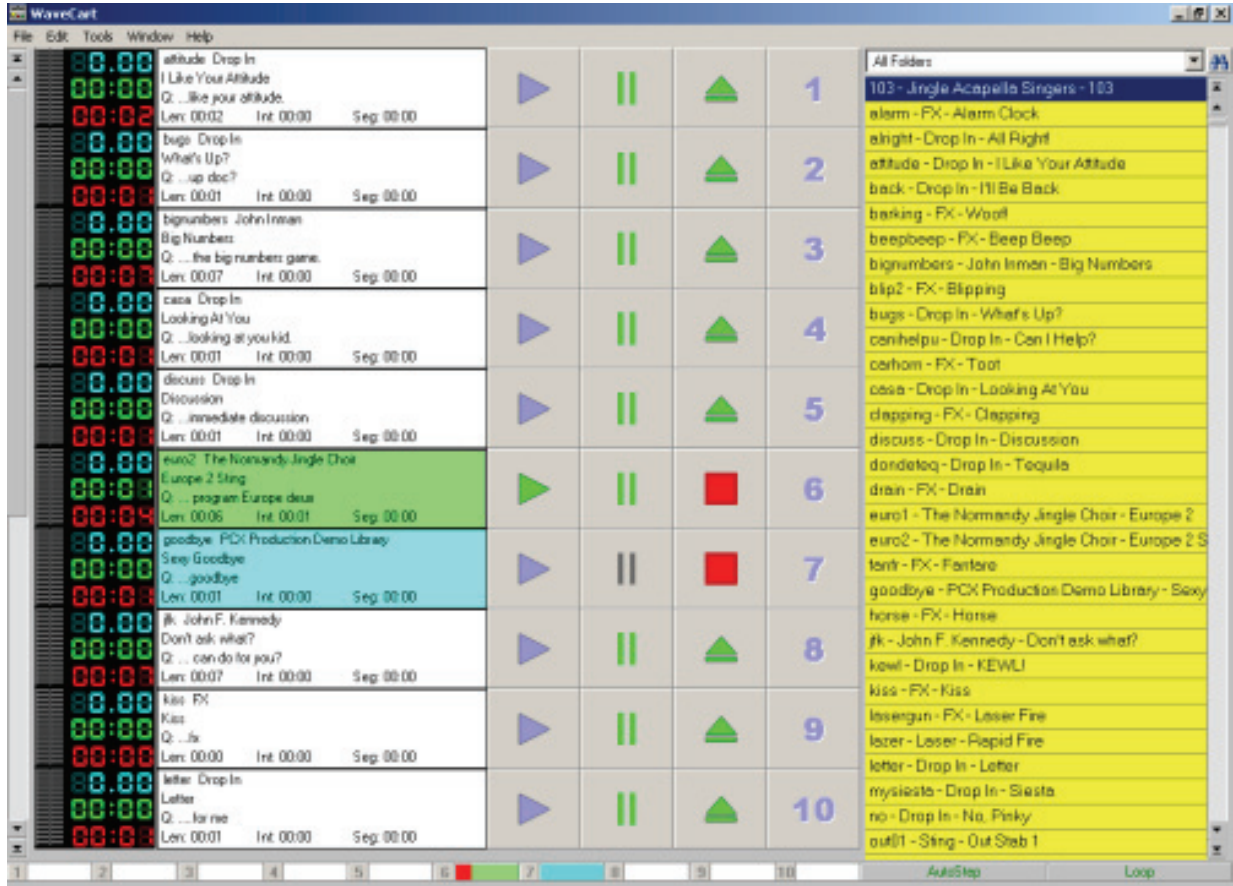
---

Contact Details.....	1
Table of contents .....	2
Getting Started .....	5
<b>Installing WaveCart.....</b>	<b>5</b>
System Requirements .....	5
Optimization .....	6
Installation .....	6
Uninstalling.....	6
<b>QuickStart.....</b>	<b>7</b>
Starting WaveCart .....	7
Adding New Files.....	8
<b>Main Screen .....</b>	<b>9</b>
AutoStep & Loop .....	9
Level Meters .....	10
Timers.....	10
Deck Label.....	10
Play Controls.....	10
Audio List Controls.....	11
Status Bar.....	11
Menus .....	11
File.....	11
Edit .....	11
Tools.....	12
Window .....	12
Help .....	13
Audio List (Right-Click Menu).....	13
Play Deck (Right-Click Menu).....	14
<b>About.....</b>	<b>14</b>
<b>Cart Viewer .....</b>	<b>15</b>
Average Length.....	16
Randomize.....	16
Play Hooks Only .....	17
<b>Copy Text.....</b>	<b>18</b>

<b>Event Log</b> .....	19
<b>HotKeys</b> .....	20
<b>Registration</b> .....	21
<b>Security</b> .....	22
Security Options.....	22
<b>Stacks</b> .....	24
<b>Triggers Sets</b> .....	25
<b>Program Options</b> .....	26
General .....	26
Startup Settings .....	26
System Options.....	27
Event Logging Type.....	27
Text Settings.....	27
Deck Labels .....	27
Station ID .....	27
SoundHound Settings .....	27
Paths.....	28
Playback.....	28
Hardware .....	29
Hardware Selection.....	29
Trigger Test Indicators.....	30
Spacebar Behaviour While Playing .....	30
Audio Mode.....	30
<b>Support</b> .....	31
<b>Copyright</b> .....	31

# Introduction

WaveCart is the original on-screen, Cart Machine in use by thousands of broadcasters around the World and was even used at the Atlanta Olympic Games!



WaveCart uses a standard PC and sound-card to play back multiple audio files, optionally to different audio outputs and can automatically sequence from one deck to another.

Each of the decks has a label clearly showing information about the audio file being played and there are timers showing Elapsed, Remaining and even an Intro countdown.

As well as up to 10 on-screen decks, an additional 24 HotKeys are available for frequently used audio files.

Individual play decks or audio files can be **triggered** using the BSI Trigger Kit (or other optional hardware devices) making it easy to interface to satellite receivers, mixing consoles or button boxes etc. Up to 24 incoming triggers are available.

Information about how to get started with WaveCart is explained in the [QuickStart](#) section.

For any questions of a technical nature related to WaveCart, please refer to <http://support.bsiusa.com>

## Getting Started

---

Consult the following sections for information on installation, configuring, using and getting the most out of WaveCart.

- Installation
- Starting the program
- QuickStart Guide
- Adding New Files
- Main Screen
- Security Options
- Event Logs
- Registration & Validation
- Support

## Installing WaveCart

---

### System Requirements

The computer system needed to run WaveCart very much depends on exactly what you want to do. WaveCart will run on a wide range of computers, but some features will require more than a bare-bones minimum.

#### **Bare-bones Minimum**

Intel Pentium III, 450Mhz Processor (we do not recommend AMD, Cyrix or Celeron processors)  
Microsoft Windows 2000 SP4 or XP Professional SP2 (we do not recommend using any operating system designed for Servers as these are not optimized for multimedia use)  
128MB memory (512MB when using XP Professional)  
USB Port (for Hardware Key)  
At least one Sound Card, with Windows MME Wave Drivers

#### **Recommended Configuration**

Intel Pentium 4, 2.4Ghz or higher  
Windows XP Professional SP2 (we do not recommend using any operating system designed for Servers as these are not optimized for multimedia use)  
1GB Memory  
USB Port (for Hardware Key)  
2 x SATA Hard Drives (one for Windows, one for audio files)  
Professional Sound Card with multiple audio streams

## Optimization

Most off-the-shelf PCs are designed and configured for home or small office use. The demands of a multimedia computer running 24/7 are very different.

While WaveCart will run with either configuration, for maximum performance and long-term stability we highly recommend purchasing a correctly configured, custom multimedia PC directly from BSI.

Our technical support department can assist you with any software or hardware purchased directly from BSI, but we cannot guarantee to assist you configuring computers purchased elsewhere and / or may make a charge for doing so.

If you plan to supply and configure your own PC, we highly recommend obtaining a copy of the Microsoft Resoure Kit and ensuring that you have optimized your computer for performance rather than appearance.

## Installation

To Install WaveCart from the BSI Install CD, insert the CD into your CD-ROM drive.

If you have disabled the autorun feature of your CD-ROM, run the **setup.exe** file on the CD.

Use the drop-down box to select **WaveCart** and then click the **Install** button

Follow the on-screen prompts, and selecting **Full** if you are installing for the first time, or **Upgrade** to preserve settings from a previous installation of WaveCart.

### IMPORTANT NOTE:

WaveCart 4.0 requires a Hardware Key to validate the program. Please ensure that you have installed the **Sentinel Driver** before trying to register the program. You'll find a copy on the BSI Install CD and on the drivers page of our Web Site.

## Uninstalling

To Uninstall WaveCart

1. Click the **Start** button.
2. Select **Control Panel**.
3. Double-click **Add/Remove Programs**.
4. Click **Change or Remove Programs**.
5. Then select **WaveCart** from the list of programs that can be automatically removed.
6. Click the **Remove** button to uninstall WaveCart.

WaveCart's uninstall program will have deleted any files it created that are no longer is use by any other programs still installed on your PC.

It will not delete any user generated files, including Audio Files, Events Logs, Stacks etc.

# QuickStart

---

## Starting WaveCart

To start WaveCart, click the WaveCart icon found in the **Start** menu, in **Programs > Broadcast Software**.

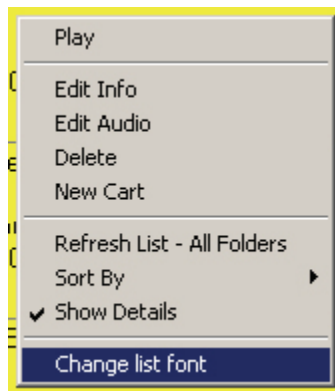
You can also double-click the Desktop Icon.



WaveCart installs some sample audio files\* which by default are installed in **c:\bsi32\audio**.

You'll see the sample audio files in the **Audio List** on the right-hand side of WaveCart's main window.

If you have difficulty reading the details, **Right-Click** and select **Change list font** to select a larger font.



To view more than just the Artist and Title, select **Show Details** from the same menu. You'll then be able to see more information about the audio file such as OutCue, Intro, Length and Start and End Dates.

\* To reduce size, the supplied sample audio files are 16-bit, 22Khz, Mono. When you add your own audio files, we suggest using 16-bit, 44.1Khz, Stereo files (linear PCM .wav) although WaveCart will also play MP3 and MPEG Layer 2 files (if your audio card supports MPEG Layer 2 playback, or if you have a suitable audio codec).

To load audio files into the play decks, **click** the audio file and then the numbered button of the deck you wish to load. (You can also **drag and drop** the audio file into the play deck too).

The control buttons will no longer be grayed out and you can **Play**, **Pause**, or **Eject** the audio file by clicking the relevant buttons.





When a file is playing, the eject button is replaced by a **Stop** button.


## Adding New Files


As previously mentioned, sample audio files are installed in **c:\bsi32\audio** and any additional files saved into the same folder will appear in the **Audio List**.

We recommend using a separate hard drive for your audio files and it's easy to configure WaveCart to monitor additional folders for new audio files using the companion **SoundHound** utility. The utility constantly monitors selected folders for new or modified audio files and keeps WaveCart's audio database (and thus **Audio List**) up-to-date.

 **SoundHound** is usually automatically launched when WaveCart starts and appears as a pair of binoculars in the System Tray. Double-click the icon to view **SoundHound**.

 From the **Folders** tab click the **Add a folder** icon and browse to the folder you want to add. We recommend using up to 8 folders and that all folders should be on your local hard drive. While there are no physical limitations in WaveCart that prevent you doing otherwise, we are unable to support any issues arising out of your failure to adhere to our recommendations.

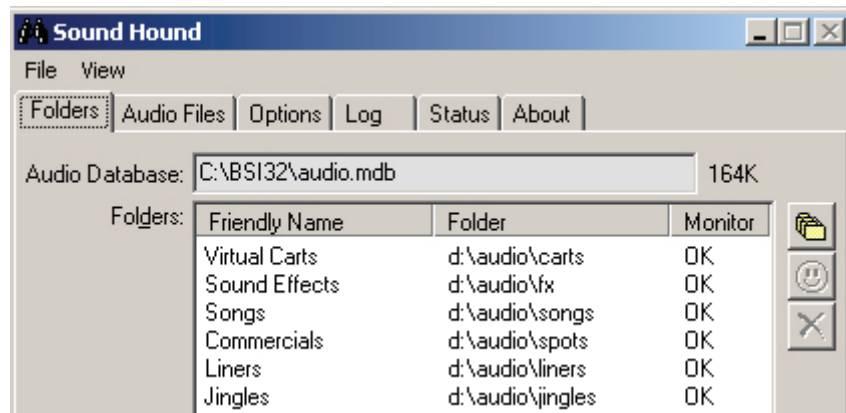
 Rather than reference different folders by their actual paths, you can give each path a **friendly** name (for example, Songs, Spots, Sound Effects, etc.) and tell WaveCart to display the friendly name instead (in the Program Options).

 When you no longer want to monitor a folder, highlight the folder you want to remove and click the **Remove a folder** icon.

There are two diagnostic functions on the **Folders** tab which are useful when optimizing or troubleshooting your system.

Firstly, the location and size of the **Audio Database** are easily obtained from this screen. Over time, the database will increase and should be deleted (with WaveCart shut down). It will be automatically rebuilt once WaveCart is restarted.

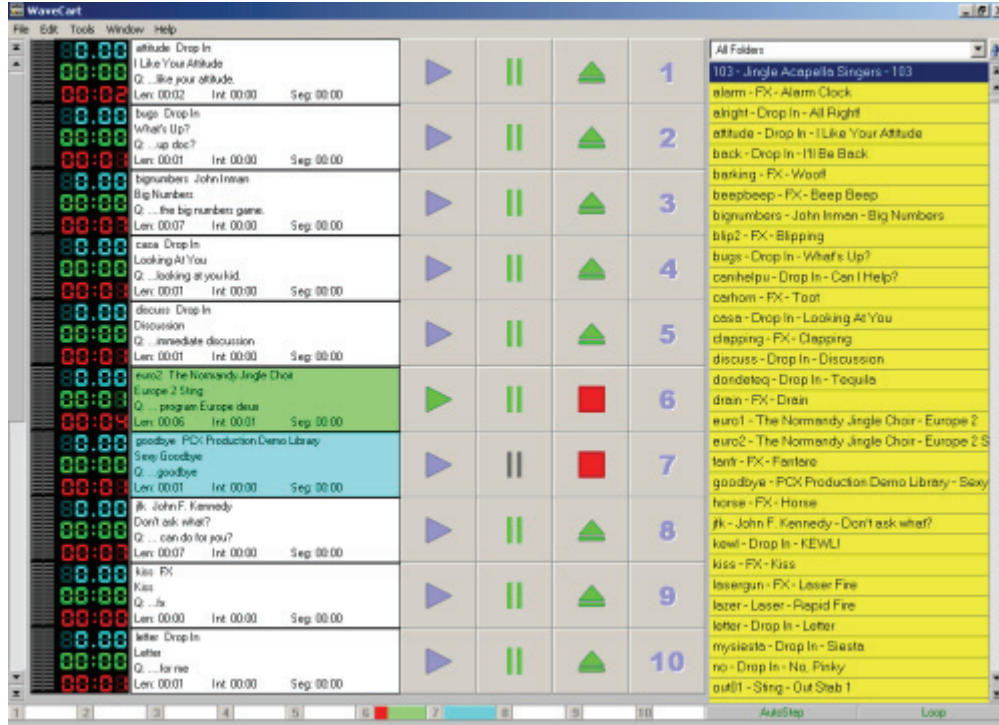
Secondly, the **Monitor** column indicates whether or not there's a problem monitoring a particular folder. If all is well, you'll see an **OK** in this column.



**NOTE:** WaveCart has been designed to work optimally with the number of files most stations schedule, between 2,500 and 3,500. We do not recommend using more than 5,000 files (the number of songs you can comfortably store on a single 250 GB hard drive) as performance will reduce after that point due, in part to the larger database.

## Main Screen

WaveCart's main screen displays up to 10 Play Decks and the **Audio List**. Use the **Window > Optimize Display** menu option to fit the maximum number of decks on screen.



The left-hand scroll bar can be used to scroll the decks up and down if your display will not accommodate all ten decks on screen at the same time.

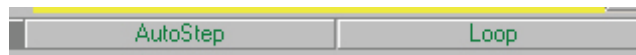
The right-hand scroll bar is used to navigate through the list of audio files.

## AutoStep & Loop

The **AutoStep** feature allows play decks to sequence automatically. This is useful for segueing songs automatically, or running a spot break.

**Loop** allows play back to continuously sequence through the decks (this relies on the Program Option to reload a deck once playback has finished). This is especially useful where virtual carts are used and can form a rudimentary automation or sustaining service.

The **AutoStep** and **Loop** indicators can also be used to toggle each option on and off. Green indicates the feature is active, while red shows that the feature is not in use.



## Level Meters

If the sound card you're using provides a Windows MME compliant Peak Meter control (such as our recommended AudioScience cards) then WaveCart will display the audio level on each decks meters. Most domestic and many semi-pro sound cards do not provide a Peak Meter control.

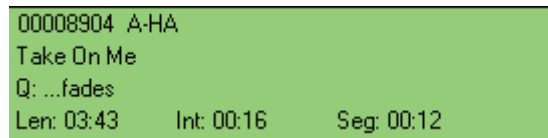
## Timers

Each deck has three timers; an **Intro** countdown is displayed in blue, the **Elapsed** time is shown in green, and the **Remaining** time is shown in red.



## Deck Label

When loaded, the play deck label will display the audio filename, Artist & Title information together with the **OutCue**, **Length**, **Intro**, and **Segue** times.



While playing, the label background turns green.

When a deck is paused, it turns Cyan and (if **Attempt Segues** is checked) will automatically start when the deck before it reaches the Segue point.

WaveCart will also look at the Start and End Date of an audio file and warn you that the audio file is not valid for play by turning the background color **red**. WaveCart will not prevent you from playing the file though.

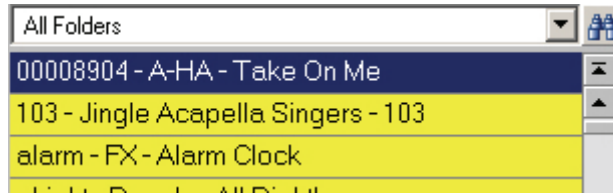
## Play Controls

The touch-screen compatible **Play Controls** allow you to Play, Pause and Stop a file. (If the file is already stopped, you can Eject the deck).

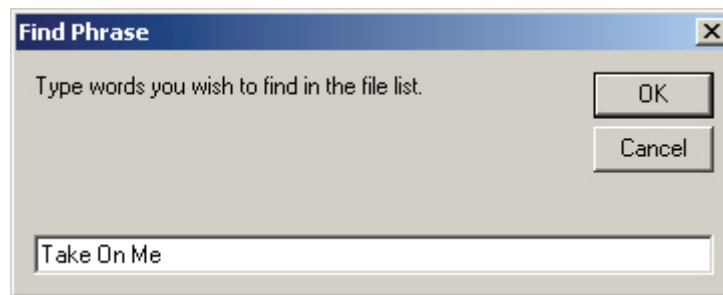


## Audio List Controls

By default, the **Audio List** will show the contents of all folders monitored by **SoundHound**. Using the drop down box you can limit the audio list display to any single folder that SoundHound is monitoring.



Using the **Find** button, you can search the **Audio List** for a particular phrase (for example, Artist or Title).



## Status Bar

The **Status Bar** provides a handy visual reference to the play position of each of the decks.



## Menus

### File

- Open Stack  
Opens a previously saved **Stack** of play decks
- Save Stack  
Saves the currently loaded **Stack** of play decks
- Save Stack As  
Allows you to save the current **Stack** of play decks with a different name
- Exit  
Shuts down WaveCart

### Edit

- Audio Info  
Launches the BSI Info Editor allowing you to store additional information inside the audio file itself

- **Audio Editor**  
Opens your (optional) Audio Editor application, such as Adobe Audition. (The path to this must be setup in the **Program Options**).
- **Event Logs**  
WaveCart will optionally keep track of every audio file played in either ASCII or Microsoft Access format. Use this option to select and view any Event Log.
- **HotKeys Setup**  
Launches the HotKeys setup allowing you to select the Current and StartUp HotKeys sets.
- **Triggers Setup**  
Launches the Triggers Setup
- **Find**  
Allows you to search the Audio List for a phrase (such as Artist or Title)
- **Find Again**  
Searches the Audio List for the next instance of a phrase

### **Tools**

- **AutoStep**  
Activates automatic sequencing of the decks
- **Loop**  
If decks are not cleared after they have played, then WaveCart will sequence from deck 1 to 10 and then restart deck 1 again and loop the decks.
- **Triggers**  
Turns on or off incoming Triggers
- **HotKeys**  
Displays the current HotKeys Palette
- **Deck Height**  
Adjust the height of the Play Decks
- **Pause All Decks**  
Pauses all currently loaded decks, allowing them to sequence automatically if the relevant options are selected
- **UnPause All Decks**  
Clears pause and places decks into stopped mode. Decks will no longer automatically sequence
- **Clear Decks**  
Unloads all decks
- **Program Options**  
Displays WaveCart's Program Options

### **Window**

- **Optimize Display**  
Maximizes the number of decks displayed on screen based on your screen resolution.

## Help

- WaveCart Help  
Opens the Help File
- Technical Support  
Opens your default Web Browser and navigates to the BSI Support Centre (requires Internet Access)
- Security  
Allows access to WaveCart's Security Options
- Register  
Validates your Hardware Key with the provided Validation Code to prevent WaveCart shutting down every few minutes
- About  
Display the Registration Status and WaveCart Version.

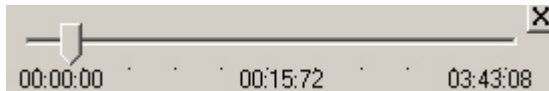
## Audio List (Right-Click Menu)

- Play  
Auditions the highlighted file
- Edit Info  
Launches the Info Editor
- Edit Audio  
Opens your (optional) Audio Editor
- Delete  
Permanently deletes the currently highlighted file
- New Cart  
Creates new Virtual Cart
- Refresh List  
Refreshes the audio list (forcing a database refresh)
- Sort By  
Sorts the audio list using any one of the following parameters:  
Artist/Advertiser  
Category  
Description  
End Date  
Length  
Name  
Start Date
- Ascending  
Sorts the list in Ascending order
- Descending  
Sorts the list in Descending order
- Show Details  
Toggles whether full or limited details of each audio file are displayed

- Change list font  
Allows you select a different Windows font for the Audio List

### Play Deck (Right-Click Menu)

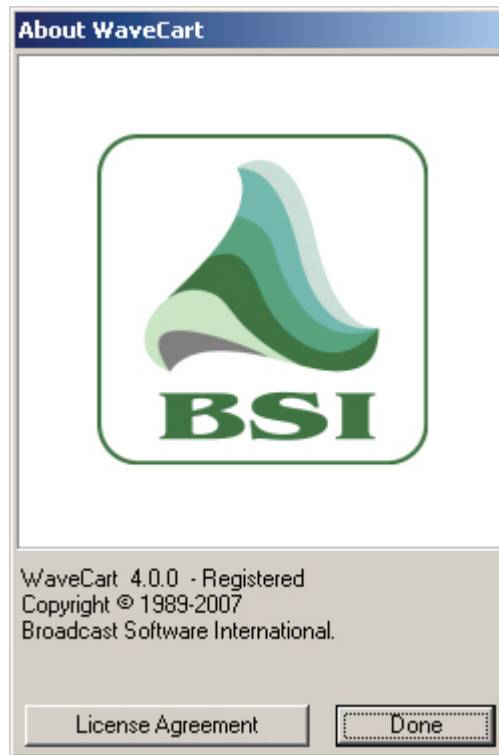
- Quick Load  
Allows you to quickly enter a known filename to load into the selected deck
- Scrubber  
Opens up a scrubber allowing you to navigate through the audio file. Click the **X** to close the scrubber.



## About

---

The **Help > About** menu option display information about WaveCart including the full version number and registration status.



You can also view the full **License Agreement** from this screen.

# Cart Viewer

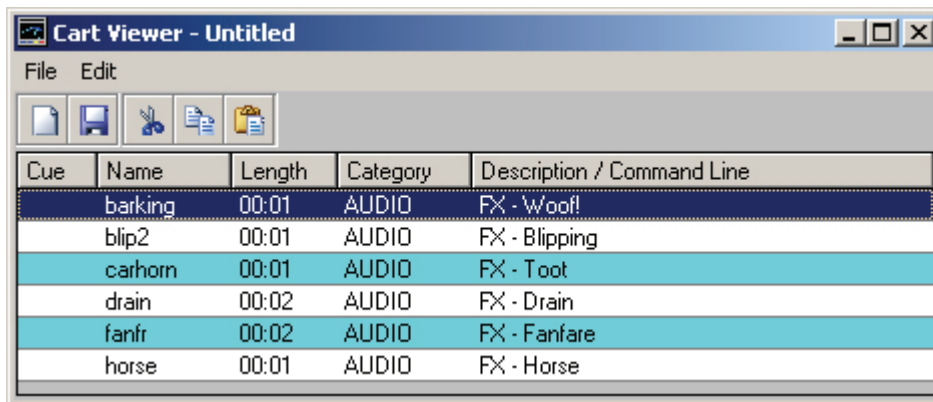
As well as audio files, WaveCart supports the use of **Virtual Carts** (the ability to store multiple audio files in a single file). Within WaveCart (and BSI Simian) Virtual Carts are often abbreviated to Carts but are otherwise identical.

Events inside a virtual cart can either be played individually, with the next (or optionally random) file played next time the cart is played...or multiple events can be played 'back-to-back' (but not overlapped).

Launch the **Cart Viewer** from the Audio List's right-click menu or right-click any existing cart (colored green in the Audio List). You can also open the Cart Viewer using the **Edit > New Cart** or **CTRL+R** shortcut.



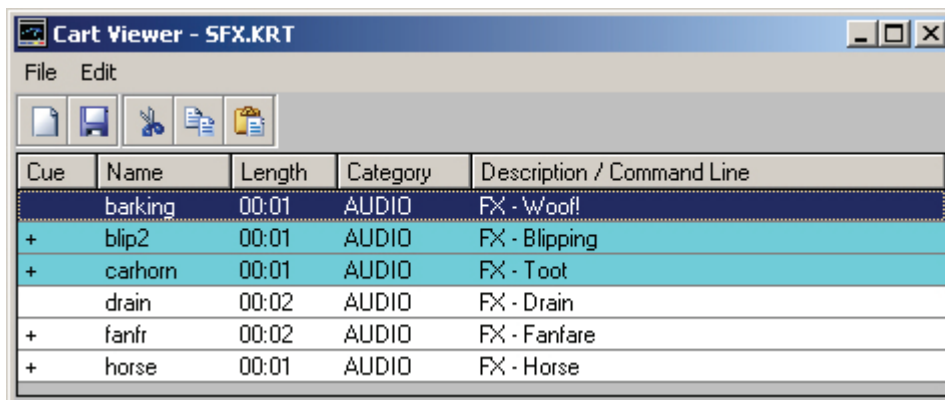
Create a new blank cart by clicking the **New Cart** icon and drag files from the Audio List into the cart.



Using the **Edit** menu, you can Cut, Copy, or Paste files within a cart. To make an individual item in a cart next to play, use the **Edit > Make Next** option.

If you need to play multiple events in a cart back-to-back (it is not possible to overlap items within a cart, only between **different** carts and / or audio files) use the **+** key on each subsequent event you want to play. (The first item in a cart cannot have a + mark otherwise the cart would loop continuously).

In the example below, three events will play each time the cart is used. You can toggle the + mark with the + key.

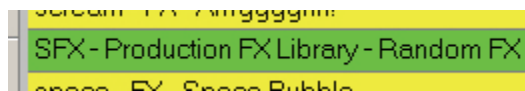


Before Saving the cart, select the cart **Properties** from the Save Dialog, or **File > Properties** menu. Although the information is optional, it's helpful to enter as much information as possible as it can be useful in the future.

## Average Length

Although optional, it's useful to enter an accurate value here so that when the Audio List is sorted, the cart is displayed in the correct position.

Carts are colored green in the Audio List.



## Randomize

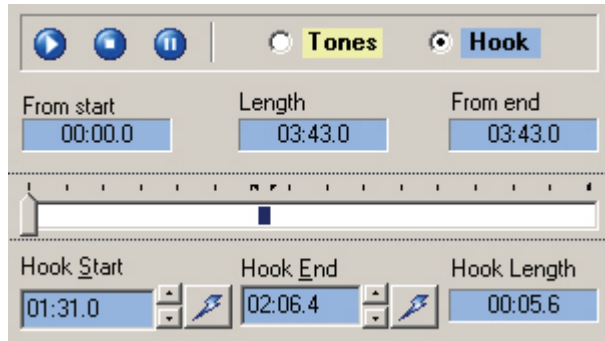
Events within a virtual cart can be randomized. This makes them ideal for things like rotating liners, jingles, filler music, etc.

When the randomized option is selected, each time the cart is played a random event will be selected from those events in the cart that have not already been played. When all events have been played, the process is restarted.

As carts are written to each time they're played (to update this information) it's important to ensure that carts are in a folder of their own. Otherwise, each time a cart is played, it could trigger a SoundHound refresh of your entire music library.

## Play Hooks Only

When this option is selected, WaveCart will only play the section of the song in the cart that you have designated as the **Hook** using the Info Editor tool.



Utilizing this feature provides the opportunity to forward sell songs that are coming up by dragging a selection of upcoming songs into a cart and selecting the **Play Hooks Only** option.

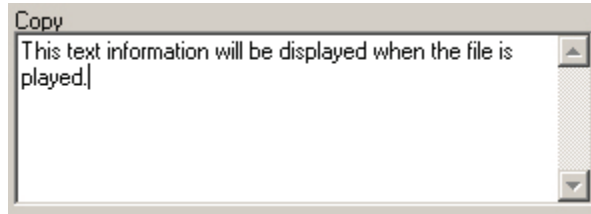
## Copy Text

---

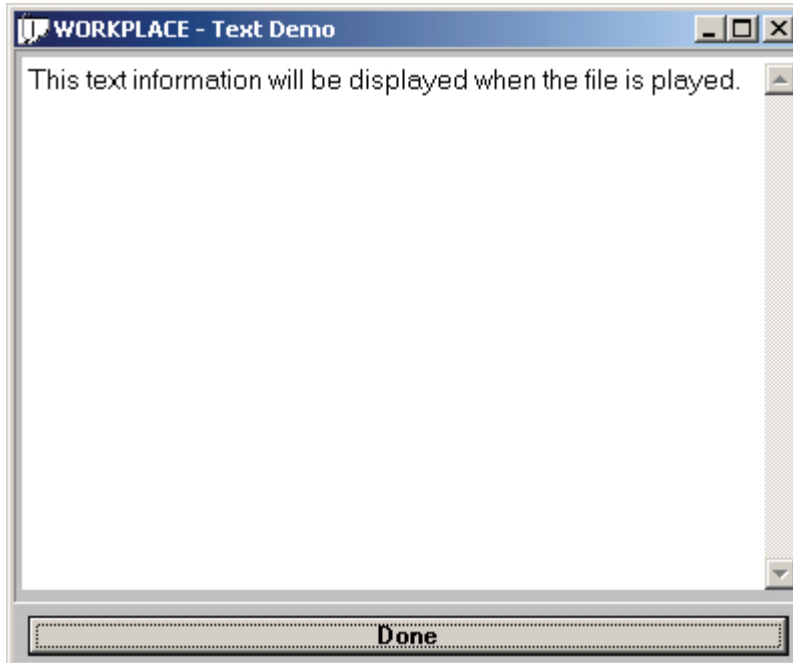
Although originally intended to display live copy for spots, WaveCart customers around the World have also found other novel uses of embedding textual information into their audio files which is displayed when the file is played.

For example, the latest Weather or Traffic Reports can be displayed when the relevant bed is played; or the latest news headlines when the News Sounder fires. Or you could embed liner notes for all your latest play list songs.

The information displayed is embedded into the audio file using the Info Editor **Copy** field.



Any information entered into that field can be displayed each time that file is played. Just activate the option from the main **Program Options**.



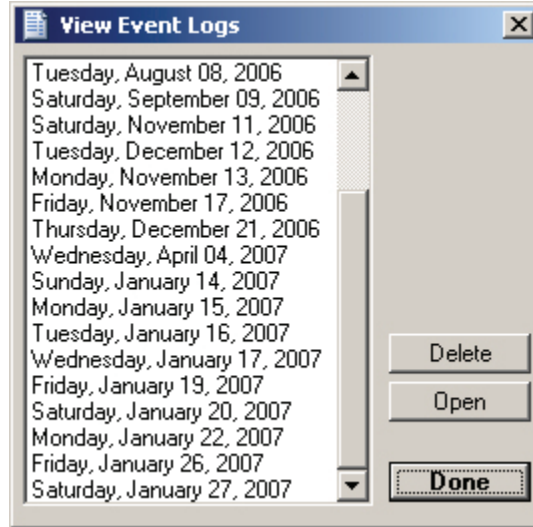
## Event Log

---

WaveCart will optionally create an Event Log of every audio file played.

When Spots are being played using WaveCart, the Event Log can form the basis of your Affidavit or might be useful during trouble-shooting, etc.

To view previously created logs, select the **Edit > View Events Logs** option from the main menu and then select the date you want to view (your computer regional date settings should be set to Month, Day, Year).



WaveCart can produce Microsoft Access compatible logs, or plain ASCII text files which are pipe delimited.

## HotKeys

As well as WaveCart's 10 play decks, there are an additional 24 **HotKeys** which are played using the F1 to F12 and SHIFT+F1 to SHIFT+F12 buttons on your keyboard, or from the **HotKeys** palette.

To view the HotKeys palette, click **Tools > HotKeys** from the main menu. You can re-size the palette horizontally if you find that, as in the example below, not all the HotKey names fit in the default space provided.

HotKeys		
F1 - The Normandy Jingle Choir - Europe 2	F5 - FX - Fanfare	F9 - Drop In - Letter
F2 - FX - Drain	F6 - FX - Production Demo Library - Sexy Goodbye	F10 - Laser - Rapid Fire
F3 - The Normandy Jingle Choir - Europe 2	F7 - Drop In - KEWLI	F11 - Billy Hanford & The Hooters - Radio Wave Jingle
F4 - The Normandy Jingle Choir - Europe 2	F8 - FX - Kiss	F12 - FX - Radio Noise
Shift+F1 - FX - Arrrgggghh!	Shift+F5 - Drop In - Lovely Place To Work	Shift+F9 - Drop In - All Right!
Shift+F2 - Bed - Out Stab 3	Shift+F6 - Drop In - Data Transfer	Shift+F10 - Drop In - I Like Your Attitude
Shift+F3 - Killer Tracks Demo - Winner	Shift+F7 - Drop In - Data Transfer	Shift+F11 - Drop In - I'll Be Back
Shift+F4 - FX - Whistle	Shift+F8 - FX - Alarm Clock	Shift+F12 - FX - Woof!

WaveCart supports multiple Hotkeys Palettes which are setup from the **Edit > HotKeys Setup** menu.



Click the **New HotKeys Set** icon to create a new set...



...or open an existing HotKeys Set to modify it.

Assign the HotKeys by dragging files from the **Audio List**. (F13 to F24 refer to the SHIFT+F1 to SHIFT+F12 buttons).

T#	Name	Length	Category	Description / Command Line
F1	euro1	00:10	AUDIO	The Normandy Jingle Choir - Europe 2
F2	drain	00:02	AUDIO	FX - Drain
F3	euro1	00:10	AUDIO	The Normandy Jingle Choir - Europe 2
F4	euro2	00:06	AUDIO	The Normandy Jingle Choir - Europe 2 Sting
F5	fanfr	00:02	AUDIO	FX - Fanfare
F6	goodbye	00:01	AUDIO	PCX Production Demo Library - Sexy Goodbye
F7	kewl	00:01	AUDIO	Drop In - KEWLI
F8	kiss	00:01	AUDIO	FX - Kiss
F9	letter	00:01	AUDIO	Drop In - Letter
F10	lazer	00:01	AUDIO	Laser - Rapid Fire
F11	radio	00:14	AUDIO	Billy Hanford & The Hooters - Radio Wave Jingle
F12	rxnoise	00:02	AUDIO	FX - Radio Noise
F13	scream	00:01	AUDIO	FX - Arrrgggghh!
F14	toons	00:01	AUDIO	Bed - Out Stab 3
F15	winner	00:06	AUDIO	Killer Tracks Demo - Winner
F16	wolfwsl	00:01	AUDIO	FX - Whistle
F17	workplace	00:04	AUDIO	Drop In - Lovely Place To Work
F18	xfer	00:01	AUDIO	Drop In - Data Transfer
F19	xfer	00:01	AUDIO	Drop In - Data Transfer

StartUp HotKeys: Demo.vey  
Current HotKeys: Demo.vey



To remove a previously assigned event, highlight it and click the **Clear HotKey Event** icon.



Click the **Save HotKeys Set** button when finished.

Use the drop down boxes to select the **Current HotKeys** and the HotKeys set loaded when WaveCart is restarted.

## Registration

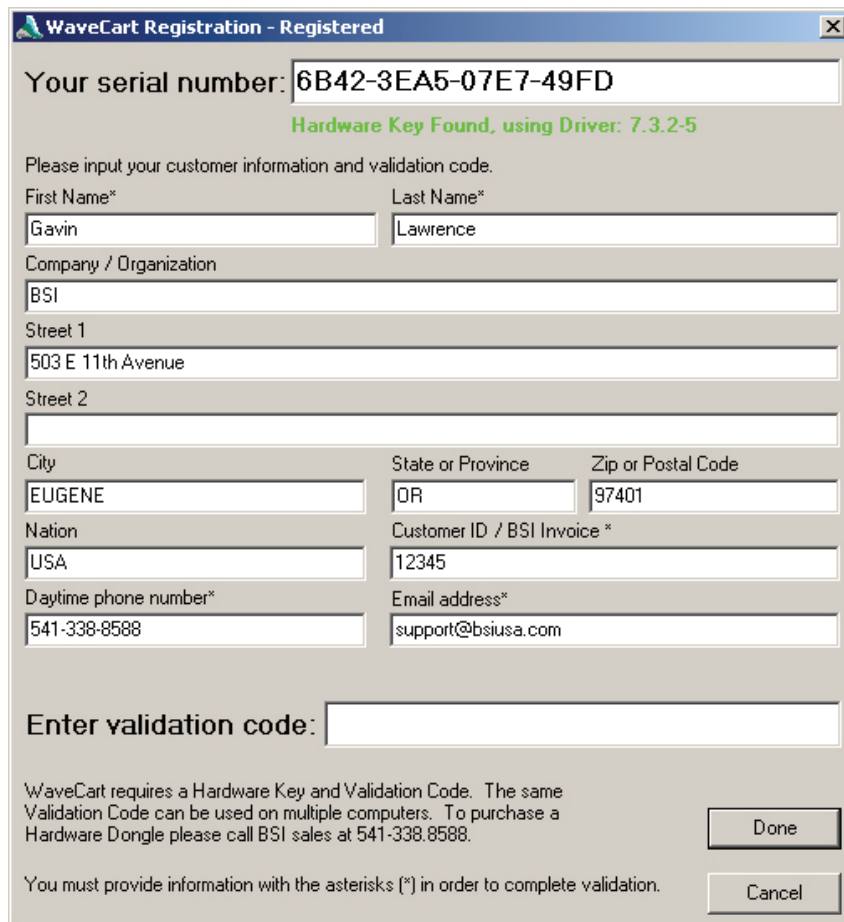
To purchase a copy of WaveCart, visit <http://www.bsiusa.com>.

**IMPORTANT NOTE:** WaveCart requires a Hardware Dongle; please ensure that you have installed the **Sentinel Driver** and inserted the USB Hardware key before registering the program.

Once you have purchased your copy of WaveCart, you will be provided with a USB Hardware Key and corresponding **Validation Code**.

You need to **Register** the program with the **Validation Code** to prevent the program shutting down every few minutes.

1. Select **Help > Register** from the main menu
2. Check that **Your serial number** matches the one written on the tag attached to your Hardware Key and enter all your information shown on the screen below.



**WaveCart Registration - Registered**

Your serial number: 6B42-3EA5-07E7-49FD

Hardware Key Found, using Driver: 7.3.2-5

Please input your customer information and validation code.

First Name\* Last Name\*

Gavin Lawrence

Company / Organization

BSI

Street 1

503 E 11th Avenue

Street 2

City State or Province Zip or Postal Code

EUGENE OR 97401

Nation Customer ID / BSI Invoice \*

USA 12345

Daytime phone number\* Email address\*

541-338-8588 support@bsiusa.com

Enter validation code:

WaveCart requires a Hardware Key and Validation Code. The same Validation Code can be used on multiple computers. To purchase a Hardware Dongle please call BSI sales at 541-338-8588.

You must provide information with the asterisks (\*) in order to complete validation.

Done

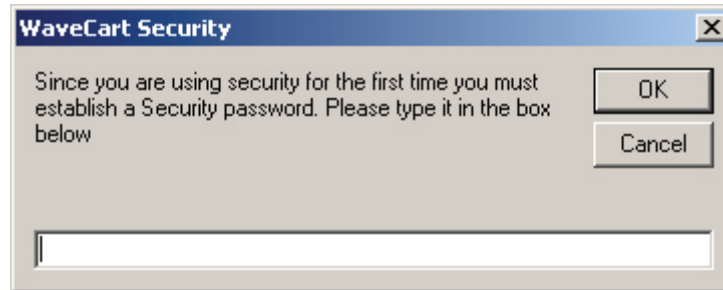
Cancel

3. **Enter validation code** as provided with your hardware key. Click **Done** when finished.
4. WaveCart is now registered (you can check on the **Help > About** screen and will no longer shut down every few minutes).

## Security

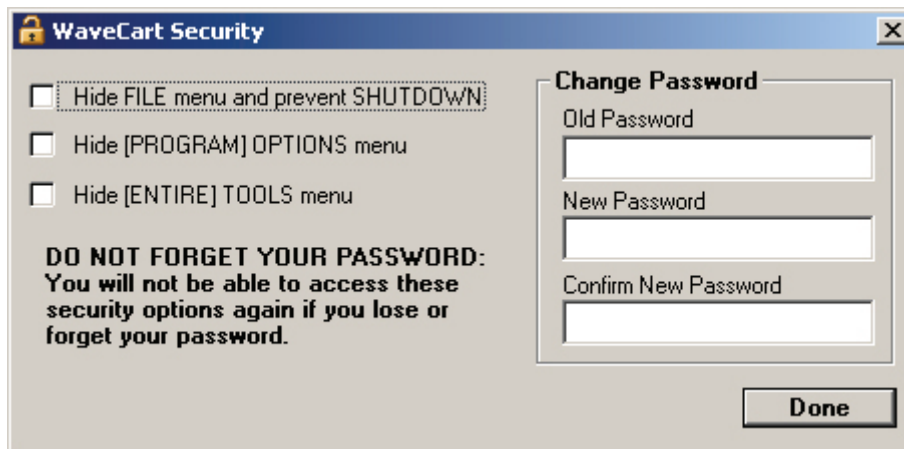
To prevent users having access to all of WaveCart's features, you can optionally password protect some of the main menu options.

To setup WaveCart's security options, click **Help > Security** from the main menu. The first time you do this, you'll be asked to choose a **Security password**.



**PLEASE DO NOT FORGET THIS PASSWORD AS YOU CANNOT MODIFY THE SECURITY SETTINGS WITHOUT IT!**

Make a note of your chosen password in safe place, enter it twice as directed, and click **OK** when done.



## Security Options

### Hide FILE menu

This hides the main **File** menu and removes all the options, including the ability to shut down WaveCart.

### Hide TOOLS menu

This hides the main **Tools** menu and removes all the options, including the **Program Options**. As hiding this menu also removes the shortcut to pause or clear all decks most users are likely to chose to hide the [Program] options only.

### Hide [PROGRAM] OPTIONS menu

Rather than restrict use of all the features available on the **Tools** menu, selecting this option will just hide the **Program Options** menu.

### **Change Password**

From time to time, you may wish to update the security password. Please make a careful note of the new password and update your records as you will not be able to access the security settings without the password.



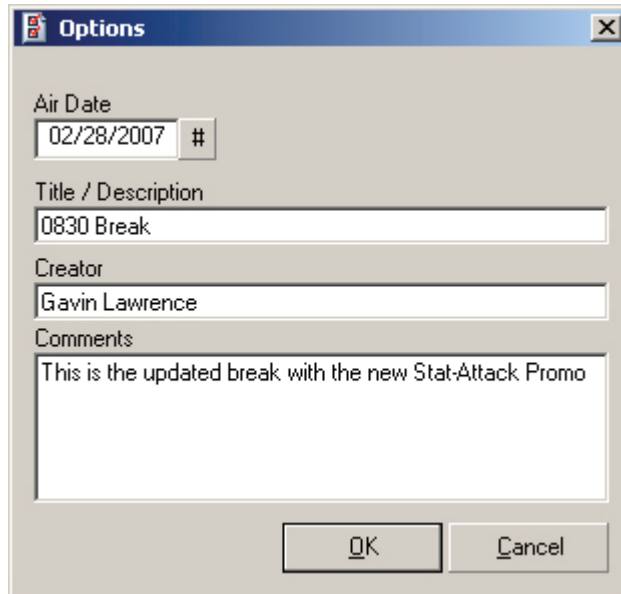
The image shows a web form titled "Change Password". It contains three input fields: "Old Password", "New Password", and "Confirm New Password". Each field is a simple rectangular box with a thin border and a light gray background. The text labels are positioned to the left of each input field.

## Stacks

---

WaveCart can save and recall stacks of decks, making it easy to save, load, and reuse frequently used collections of carts or event entire spot breaks.

When **Stacks** are saved, you can optionally enter additional information such as an **Air Date** together with Description and additional comments.



The screenshot shows a standard Windows-style dialog box titled "Options". It contains the following fields and text:

- Air Date:** A text box containing "02/28/2007" and a small button with a hash symbol "#".
- Title / Description:** A text box containing "0830 Break".
- Creator:** A text box containing "Gavin Lawrence".
- Comments:** A larger text area containing the text "This is the updated break with the new Stat-Attack Promo".
- Buttons:** "OK" and "Cancel" buttons at the bottom right.

This information is then displayed in the **File > Open Stacks** menu option.

# Triggers Sets

Using an optional hardware device, WaveCart can respond to up to 24 incoming **Triggers**.

Supported hardware devices include legacy DIO 24 cards from Computer Boards / Measurement Computing, the BSI Trigger Kit using a PMD/USB-1024LS, certain ASI sound cards such as the ASI4346 and 4336 (including ASI cards exactly matching the GPI/O functionality of those cards) and for limited use a standard PC Joystick (including USB to Joystick cable).

The number of available triggers is determined by the hardware device used; the BSI Trigger Kit provides the full 24.

To setup triggers, select the **Edit > Triggers Setup** option from the main menu.



Click the **New Triggers Set** icon to create a new set...

...or open an existing set using the **Open Triggers Set** icon



Use the drop down **Macro** list to select a desired action for an incoming trigger.



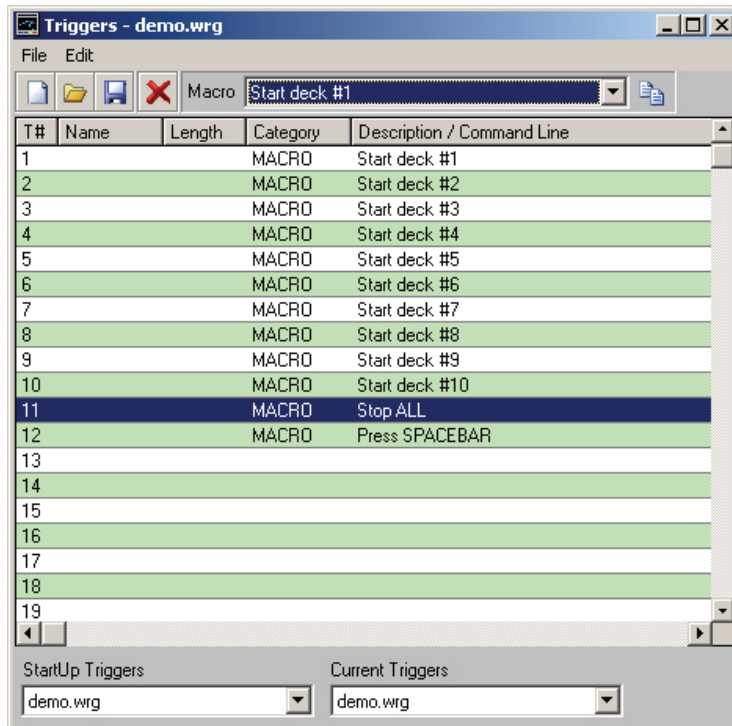
Drag the Macro to the Triggers Set using the **Drag Macro To Triggers** icon.



To remove an individual trigger, highlight it and click the **Clear Trigger Event** icon



When finished, click the **Save Triggers Set** icon

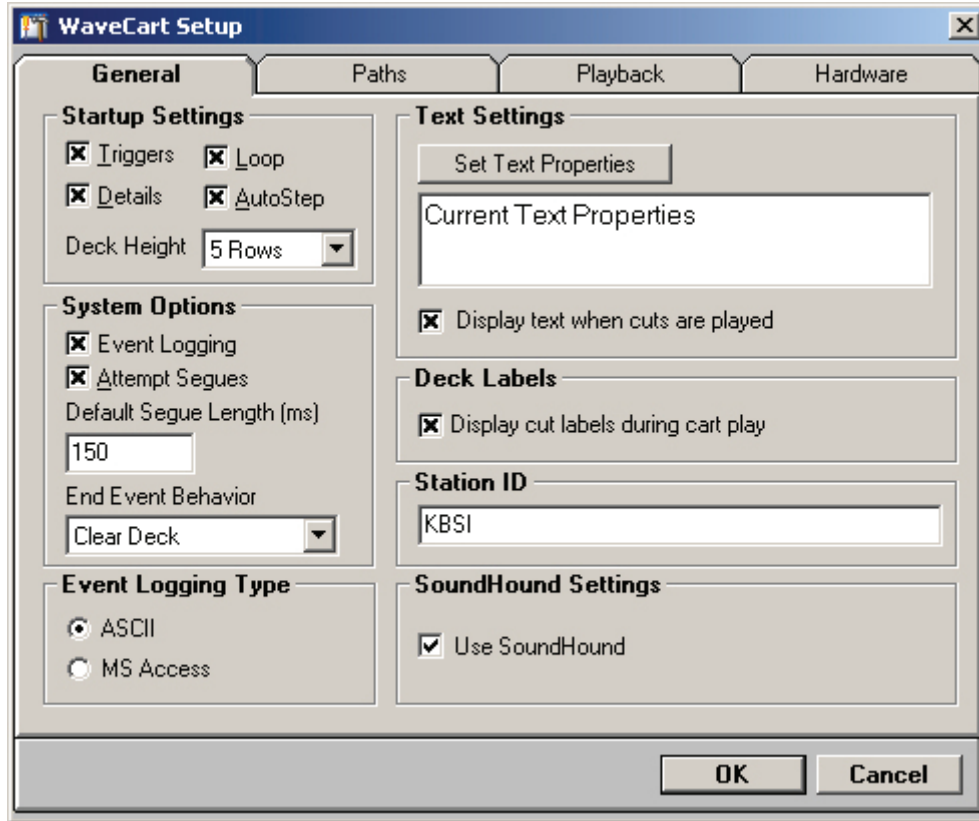


Select the **Startup Triggers** and **Current Triggers** using the drop down boxes.

# Program Options

To setup WaveCart's **Program Options** select **Tools > Program Options** from the main menu.

## General



### Startup Settings

Use these options to select which features are active when WaveCart is started. These options can also be turned on and off while WaveCart is running.

- Triggers  
When checked, WaveCart will respond to incoming **Triggers**
- Loop  
WaveCart will be placed into **Loop** mode, continuously sequencing play decks
- Details  
Audio List **Show Full Details** selected
- AutoStep  
Play Decks will automatically sequence
- Deck Height  
Selects the vertical size of the Play Decks.

## System Options

- **Event Logging**  
Activates WaveCart's built-in Event Log
- **Attempt Segues**  
If supported by your sound card, WaveCart attempt to overlap play decks when in AutoStep mode. The next deck will be started when the Segue point of the previously playing deck is reached.
- **Default Segue**  
If no Segue Marker has been placed in the audio file, the default segue length is used.
- **End Event Behavior**  
Usually, it's desirable to **Clear Deck** to prevent replay of the same event. The **Reload Deck** option is useful when WaveCart is in **Loop** mode, perhaps with randomized carts, to provide a continuous audio feed.

## Event Logging Type

- Selects the format of the Event Log, either plain text **ASCII**, or Microsoft Access format.

## Text Settings

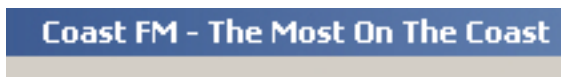
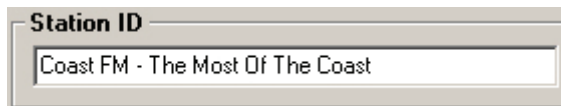
- You can customize the font and font size when the **Display text when cuts are played** option is selected. This display any text entered in the **Copy** field of the audio file using **Info Editor**.

## Deck Labels

- **Display Cut Labels During Cart Play**  
This option forces the Play Deck label to display the audio file information from within the cart, rather than the generic Virtual Cart information.

## Station ID

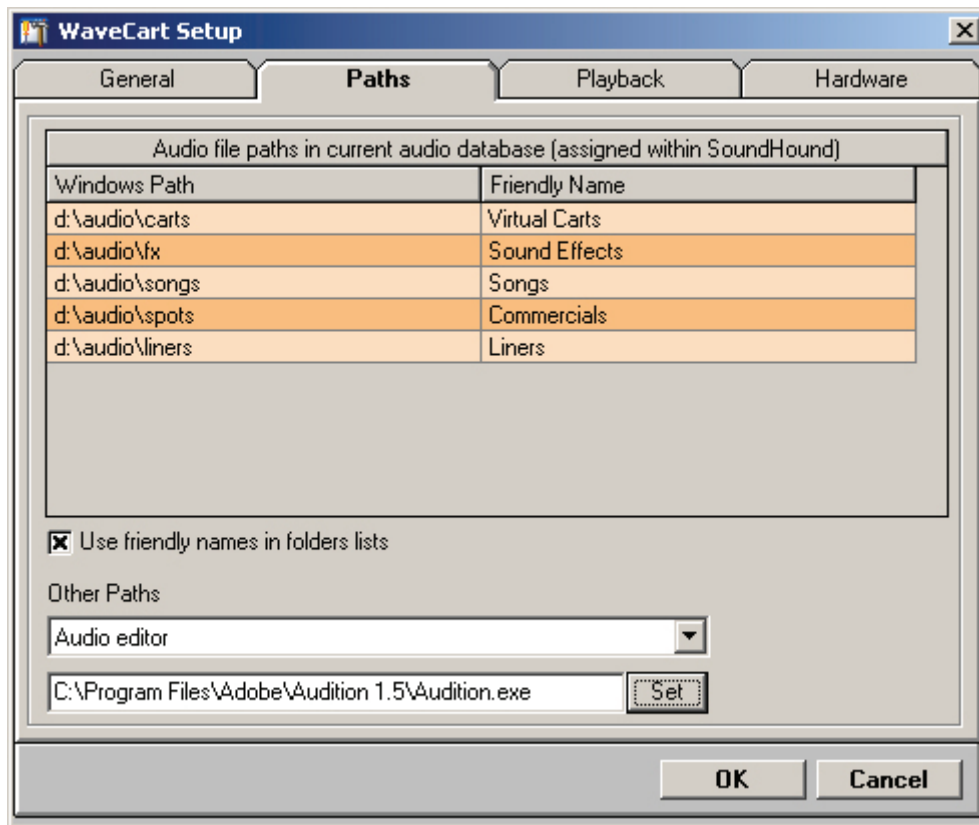
Allows you to customize the display of your version of WaveCart. This could also be used as reminder of your station's strap line.



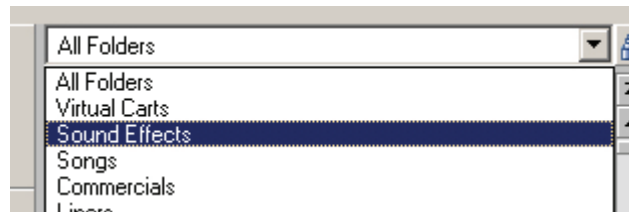
## SoundHound Settings

- **Use SoundHound**  
Unless another BSI application is already running SoundHound on your PC, then this option should be checked. WaveCart will continue to work if SoundHound is not running, but will not add any new files to the Audio list.

## Paths



Audio file paths are setup using the **SoundHound** utility, selecting the **Use friendly names in folders lists** option displayed the friendly name in the Audio Folder List instead of the full file path.



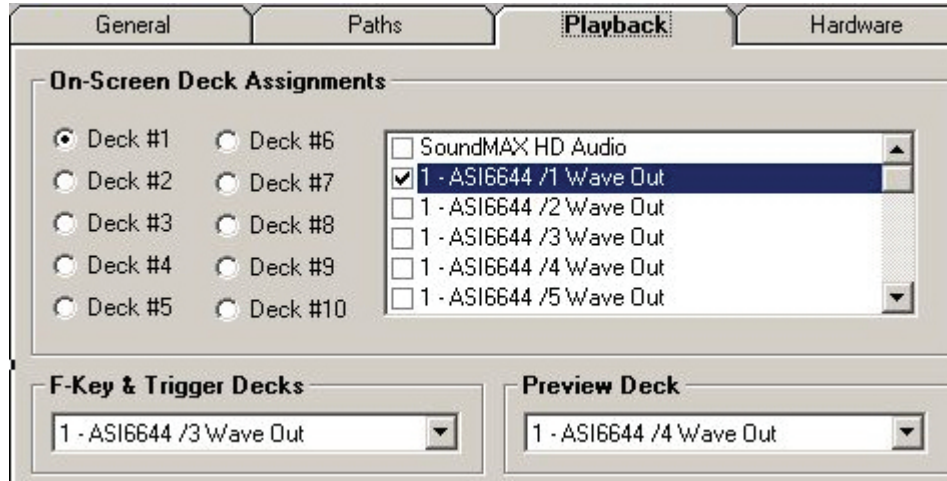
- **Other Paths**  
Allows you to set paths to a different audio database, an optional Audio Editor (not supplied) and folders for Event Logs and Stacks.

## Playback

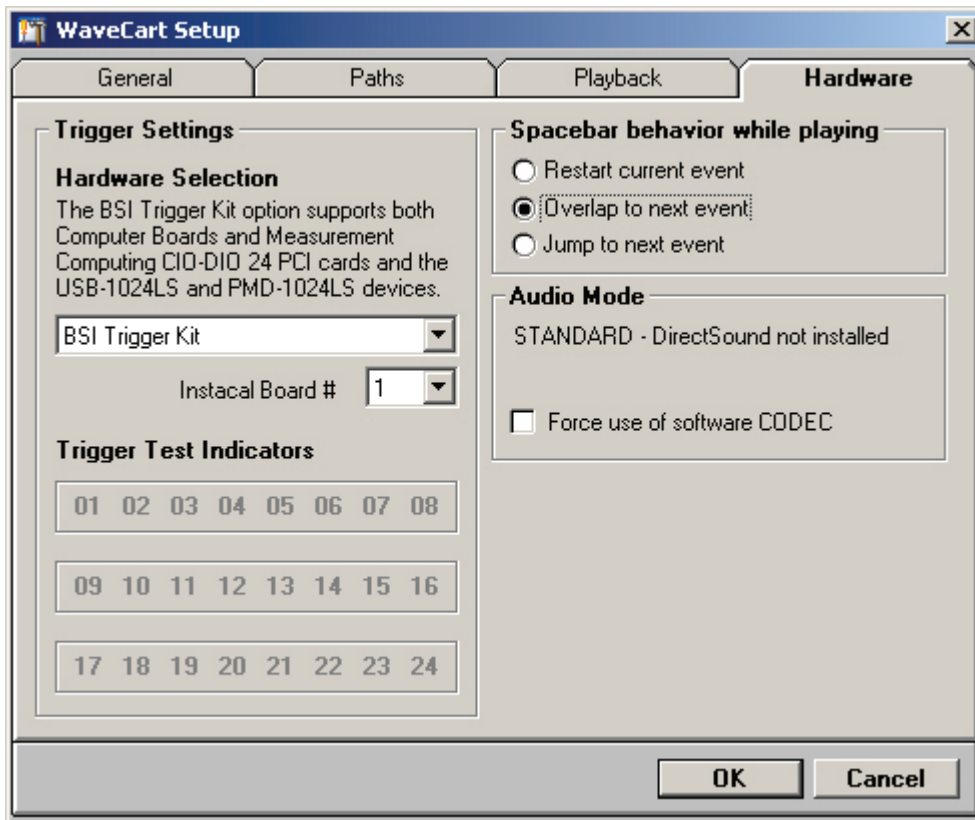
The Playback tab allows you to assign a different wave out device or sound card for each of the Play Decks, the HotKey & Trigger Decks and the Audio list Preview Deck.

It is not uncommon to only use two wave out devices for the main play decks, routed to two different physical outputs, with odd decks assigned to one output; and even decks to the other - with a domestic on-board audio card routed to a pair of PC speakers for audition / preview purposes.

However, WaveCart supports a different output for each of the 10 on-screen and three hidden (HotKeys, Triggers & Preview) decks. The capability of your sound card will determine how many files can be played back at the same time and how many different devices are available.



## Hardware



### Hardware Selection

The drop down box allows you to select which optional hardware trigger device you are using. WaveCart supports the Computerboards and Measurement Computing DIO 24 boards as well as the newer low-cost USB/PMD-1024LS devices. Although no longer

available, support remains for customers with AudioScience 4336/4346 (and other ASI cards that conform to exactly the same specifications); and for limited use a conventional Gameport Joystick, or USB Joystick interface can be used.

The selected option will determine how many triggers are available.

When using a BSI Trigger Kit, you must select the Instacal Board #.

### **Trigger Test Indicators**

These buttons will turn green momentarily if an incoming trigger is received. The buttons can also be clicked to test a trigger assignment.

### **Spacebar Behaviour While Playing**

Use this option to determine what effect pressing the Spacebar has when a deck is playing.

### **Audio Mode**

- **Standard**  
This is the default audio mode, requiring multiple play streams (or multiple sound cards) in order to overlap files.
- **DirectSound**  
When DirectSound mode is selected, then providing your sound card has full (not emulated) DirectSound support (and DirectSound is available on your PC) you can overlap multiple audio files using a single audio device even if your audio card usually only allows a single audio file to be played at the same time.
- **Force use of software CODEC**  
WaveCart supports playback of Linear PCM (.wav), ADPCM, MP3 and MPEG Layer 3 file formats. If a format is not directly supported by your audio card, this option forces audio to be played through an optional Windows ACM codec instead. Most modern PCs are supplied with an MP3 codec, but you may need to purchase a special MPEG Layer 2 ACM codec from BSI to support playback of MPEG Layer 2 (including Content Depot) files.

## Support

---

Technical Support for WaveCart is provided by our online Support Center at <http://support.bsiusa.com>.

Information about product updates and answers to common questions are available 24-hours-a-day.

If our **FAQ** or **User Forum** doesn't provide the answers you need, or if you have a problem of a technical nature relating to our software or any hardware we have supplied, then please use the links provided to submit a Support Ticket.

We aim to respond to all **Support Tickets** within 60-minutes during normal weekdays, from 6am to 6pm (PST).

Please note that **Telephone Support** for WaveCart is only available to customers that have purchased a Tech Support Plan; and we cannot undertake to diagnose or configure hardware that we have not directly supplied.

## Copyright

---

The copyright and intellectual property rights of this software, WaveCart, and all its documentation, including this online help system, are owned by **Broadcast Software International** and are protected by copyright laws and international intellectual property right treaties.

You may not copy any portion of the software or documentation in any form, except to use this software in accordance with the terms of the license agreement or to make one copy for backup purposes.

You may not alter the software in any way.