



Simian 2.0.7

What's New?

Information
info@bsiusa.com

Validation Codes
codes@bsiusa.com

Website
www.bsiusa.com

Sales
Phone: 541-338-8588
Fax: 541-338-8656
sales@bsiusa.com

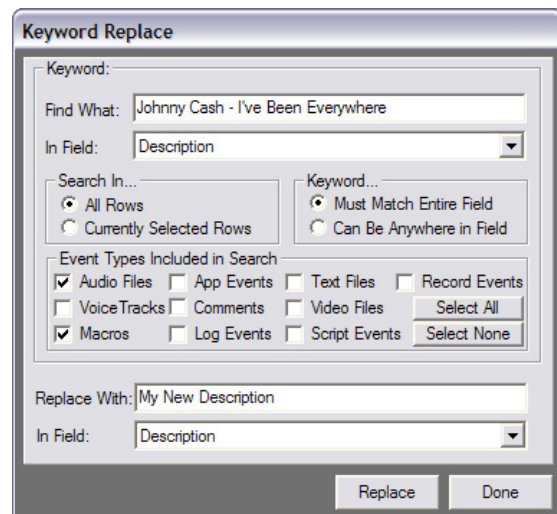
Broadcast Software International
503 East 11th Avenue
Eugene, Oregon 97401 USA
Copyright 1989-2010. All Rights Reserved.
16 March 2010 – What's New in Simian document
v2.0.7

Technical Support
541-342-5250
support.bsiusa.com

What's New in Simian 2.0.7?

Simian 2.0.7 is the latest iteration of the Simian 2.0 application. It contains more than 90 individual new and updated features, including:

- New **IFNOTEXCLUDED** macro allows you to run macros, apps, or play audio files in the Async deck if the currently playing item in the main decks is not in an exclude category. This macro is especially useful for use in conjunction with the SERIAL macro when sending artist/title info to your RDS encoder.
- New options to resolve carts in your program log before playback, including automatic options when loading and unloading a program log and a **RESOLVECARTS** macro allowing you to resolve carts on-the-fly. This feature is useful for users whom want to explicitly know what is going to play from the log at air time, and for using the BackTime feature with carts of varying length (since the carts will be resolved to their component events, the BackTime function can exactly calculate the playback length of all events). Resolves all cart types including randomized and non-randomized carts, carts with AutoStart events, and date and time windowed carts.
- New option in the **CHAIN** macro can load a specifically named log, or a default log if the macro is unable to find the specified log. That means that you can create default logs so that if somebody forgets to import a log, there is a fall-back log that will be loaded instead of re-loading the previous day's log (though that is still possible, too).
- New Program Log right-click options to edit the Cue/Scheduled Time & Filename of a line item.
- New keyword replace feature to easily change information in your program log's Cue, FileName, Category, Description, or Scheduled Time fields in one easy step (see picture at right).
- New feature to automatically fill the scheduled time field for all auto-start events in the program log based on the length of the audio files and the timed events in the log.
- **PLAYHOOKS** macro can now optionally include an audio file with the artist's name before each hook is played.
- **SAYTIME** macro can now utilize a tail.wav (or tail.mp3) audio file.
- New troubleshooting and expert options in the built-in SpyGlass diagnostic utility.

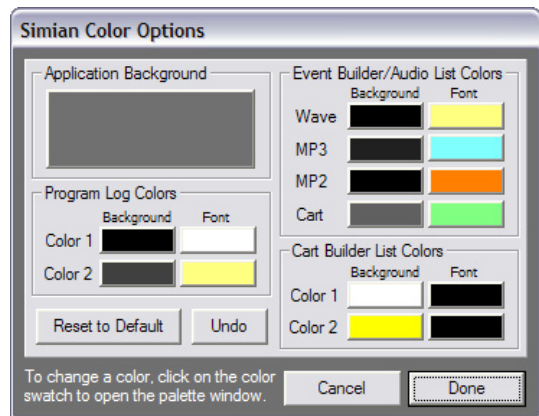


- Improved user interface look and feel options:

- New graphics for playback and record decks, vu meters, and more (see picture at right).
- Deck scrubbers now available when FlexTime/BackTime enabled.
- New drag-n-drop functionality to improve ease of workflow.



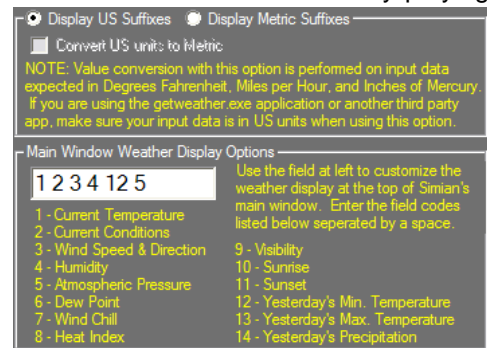
- Macro name auto-fill feature in the Event Builder (start typing a macro name and it'll complete it for you).
- New option to hide the main decks and expand the Program Log. Useful for Production Mode or small monitors.
- Memorized movable program log column widths.
- More customizable user interface colors: Now you can change the colors for audio file types, the program log, and cart builder in addition to the main user interface background (see picture at right).
- More intuitive information in the program log's BackTime to Mark and Runtime & Position displays.



- User-configurable row height in the Program Log display.

- New BackTime/FlexTime engine offers audio playback "stretch & squeeze" timing accuracy to hundredths of a percent and a new BackTime/FlexTime error log.
- New option to treat BackTime cued events as timed events. If the maximum or minimum speed percent allowed is less than what is required, your BackTime event will fade the currently playing element out and

- New weather display options including user configurable main user interface display (choose which weather data shows at the top of Simian) and optional Metric unit display and/or US to Metric data conversion (see picture at right).

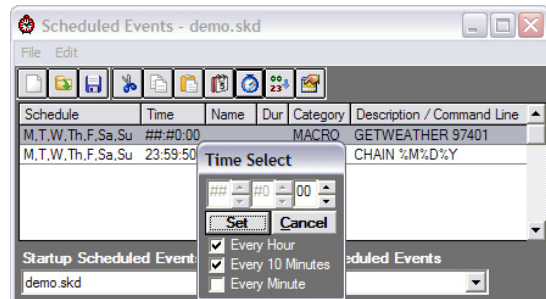


- More date meta-variables in macros: Now you can use +1 through +9 and -1 through -9 for many date-related macro variables so you can use dates up to 9 days in the future or 9 days in the past.

- New option to convert date meta-variables in the file names in your program log either when the log is imported based on the air date of the program log, or on-the-fly in real time when a file is loaded while airing the log.

- Exclude categories can now be used not only for the HTML generator, but also the Windows Media Encoder output, MetaData (PAD/XML via TCP/UDP) output, and Streaming (HTTP Call) output.

- Scheduled Events can now use wildcards! Set a single Scheduled Event to run every hour, every 10 minutes, every minute (see picture at right).



- Simian Pro feature only.