



Simian 2.1.0

What's New?

Information
info@bsiusa.com

Validation Codes
codes@bsiusa.com

Website
www.bsiusa.com

Sales
Phone: 541-338-8588
Fax: 541-338-8656
sales@bsiusa.com

Broadcast Software International
503 East 11th Avenue
Eugene, Oregon 97401 USA
Copyright 1989-2010. All Rights Reserved.
3 November 2010 – What's New in Simian document
v2.1.0

Technical Support
541-342-5250
support.bsiusa.com

What's New in Simian 2.1.0?

Simian 2.1.0 is the latest iteration of the Simian 2.0 application. It contains numerous new and updated features, including:

- Supported under Windows XP and Windows 7 32 bit operating systems.
- Manual Meta-Data entry window. Use for live shows to output Metadata, Stream Encoder data, output to your HTML page, and output serial data. You can even have the manually entered item logged to your Event Logs (see picture at right).
- **SAYTIME/SAYTEMP** macros can now utilize tenths-of-a-degree samples with the temperature announcement (conversion of temperatures in Fahrenheit results in Celsius temperatures accurate to tenths of a degree).
- New **EXITSIMIAN** macro allows you to schedule exiting of Simian with options to save the currently open log and engage Crash Recovery (meaning that when you re-open Simian, it'll start playing at the position it was at when closed). Use this macro in a cart along with the Windows "SHUTDOWN -r -f -t 05" command to automatically reboot your system once a week.
- New **RESENDECKDATA** macro to allow you to resend all configured Metadata, Stream encoding data, rebuild the Dynamic HTML pages. It also has the ability to incorporate serial data output. This macro is useful to schedule during long format shows so your data can be re-output every few minutes for Stream or RDS encoders.
- **Language Customization** is now possible with Simian's built in Language Editor. You can change menu names, field names, button titles, error messages, macro descriptions, and more with the language editor (see picture at right).
- New **DELAYEXECUTE** macro allows you to run any file or macro after a specified delay, or at a

Manual Metadata / Stream / HTML Data Output

Artist/Advertiser Royksopp	Default: Default	Category AUDIO	Default: Default: AUDIO
Title/Description Happy Up Here	Default: Default	Genre Dance	Default: Default
URL/Website http://royksopp.com/	Default: Default	Name/ID # 8473292	Default
Album Junior	Default: Default	Send Data Now	
Comments Played on Alex's live show	Default: Default		
		<input checked="" type="checkbox"/> Add Sent Data to the Event Log	
<input type="button" value="Set Current as Default"/>	<input type="button" value="Reset Defaults"/>	<input type="button" value="Clear Fields"/>	<input type="button" value="Configure Serial Output"/>
			<input type="button" value="Done"/>

Language Options

Event Builder Weather Info Log Verification Misc. Windows Messages/Warnings
Menus User Interface Program Options Hardware Options

NOTE: Simian must be restarted for all language changes to take effect.
NOTE: Shaded fields are duplicated on multiple windows or tabs. Entries in these fields will automatically populate the duplicate fields.

Use Default English Language Options
 Enable Custom Language Options

Files	Files	Air Date	Air Date	Status	Status
Folder	Folder	Segue	Segue	OK	OK
Folders	Folders	Category	Category	Cancel	Cancel
Sorted ascending by	Sorted ascending by	Description	Description	Done	Done
Sorted descending by	Sorted descending by	Program Log	Program Log	Apply	Apply
All	All	Audio List	Audio List	Delete	Delete
Filtered	Filtered	Cue	Cue	Clear All	Clear All
Actual	Actual	Scheduled	Scheduled	Clear	Clear
		Duration	Duration	Set	Set
		File Name	File Name	Reset	Reset

- Main Automation Mode Button
 AUTO (Full Auto) | AUTO
 ASSIST (Live Assist) | ASSIST
 OFF (Off/Manual) | OFF

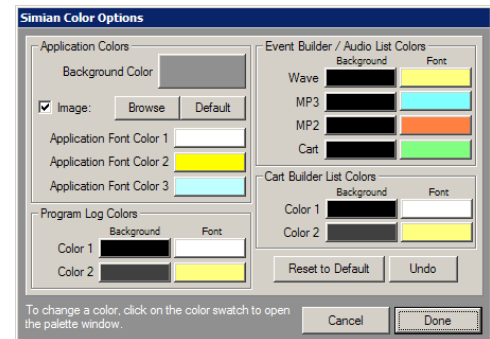
Cue Types
 Auto Start | Auto Start
 Manual | Manual
 Time Next | Time Next
 Time Immediate | Time Immediate
 Non-Sequential | Non-Sequential

specific time. This macro greatly simplifies multi-part recordings by allowing you to run your record stop and your next delayed record start all at the start-of-break trigger.

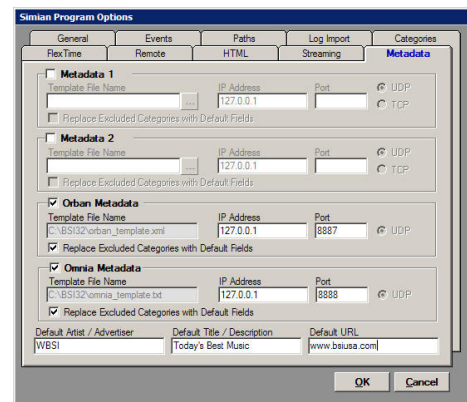
- New **TCPOUT** and **UDPOUT** macros to allow you to output text data to a TCP or UDP server. Use this to manually send data to stream encoders, RDS encoders, or third party hardware that accepts commands via TCP or UDP.



- Improved user interface look and feel :
 - New graphics for playback and record decks, Hot Key panel, Mixer Panel, Voice Track Panel and more (picture above shows new decks).
 - Album Art/Station Logo display allows you to display your station logo on Simian's user interface. In addition, if you have .jpg, .gif, or .bmp files that have file names that match your audio file's artist and/or album names, Simian will display the album art for the duration of that audio file (see image at the top of this page). This feature can be enabled or disabled.
 - More customizable user interface colors: Now in addition to customizing the colors for audio file types, the program log, cart builder and the main user interface background, now you can set Simian's background to a custom picture with any .jpg, .gif, or .bmp.



- New `<!--BSIALBUMARTFILENAME-->` HTML field tag which outputs the filename of the album art displayed in the Album Art/Station Logo display so you can have your dynamic HTML page display the same album art as is displayed in Simian's user interface (requires you have a copy of your album art images on your web server).
- New built-in Metadata templates for data output to Orban Optimod and Omnia AXE stream encoders.
- New Incoming Trigger Log. Now you can log the time, function, and trigger number of all triggers received when you need to troubleshoot.
- New %X variable for the CHAIN macro allowing program log names containing "WKD" to be loaded on weekdays, "SAT" on Saturdays, and "SUN" on Sundays.



- Simian Pro feature only.