



Broadcast
Software
International

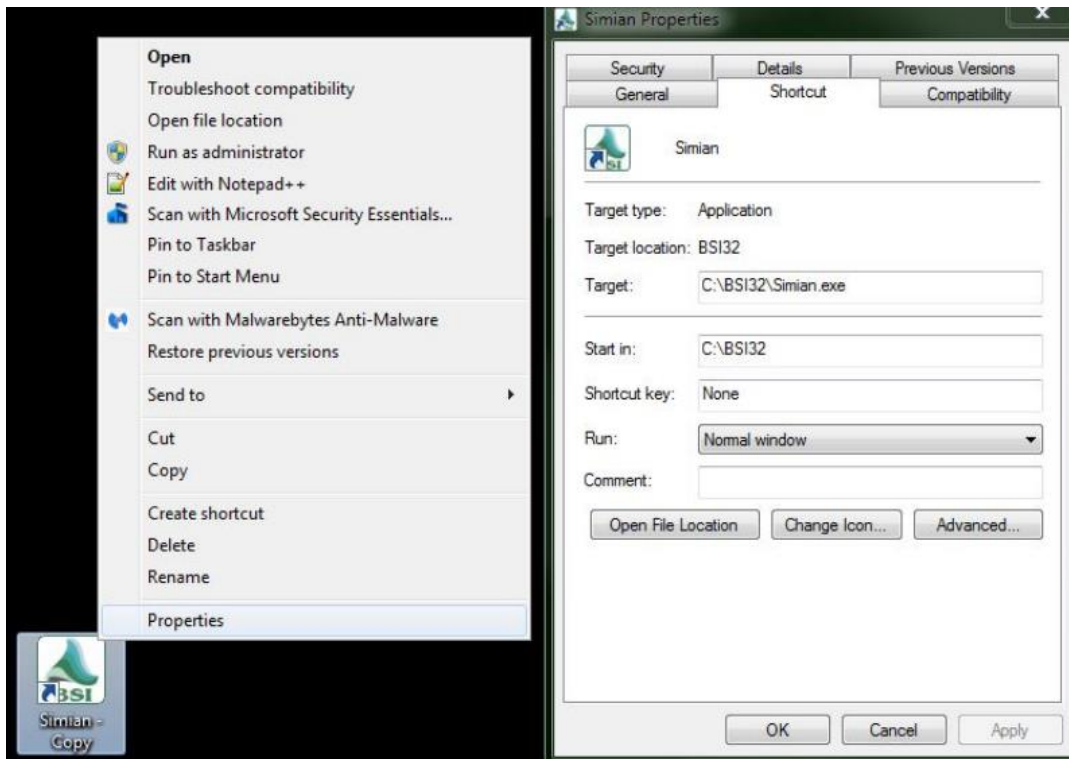


Frequently Asked Questions

Shortcuts for Air & Production modes on multi-instance licenses

Simian and Wavecart have up to 9 different sessions. Each session has its own set of Program Options and Hardware Options settings. With a non-multi instance license, when you launch Simian it will load in to air mode and any additional instances of Simian you launch after that will run in production mode. With a multi-instance license, all additional instances of Simian will instead launch in air mode. The second instance of Simian can be put in to session 2, and configured differently than session 1. You will need sound card resources for each session to have its own playback device assignments and outputs. For example, one AudioScience sound card with 2 or more outputs or two separate ASI cards.

Here are instructions for creating shortcuts to open Simian into a specific mode and session, which will make it easy to manage.

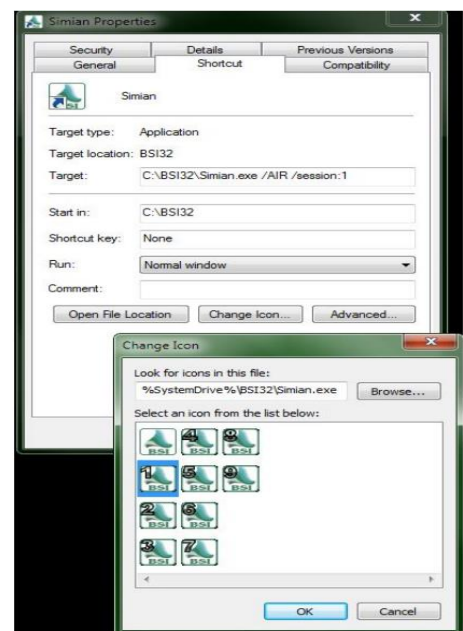


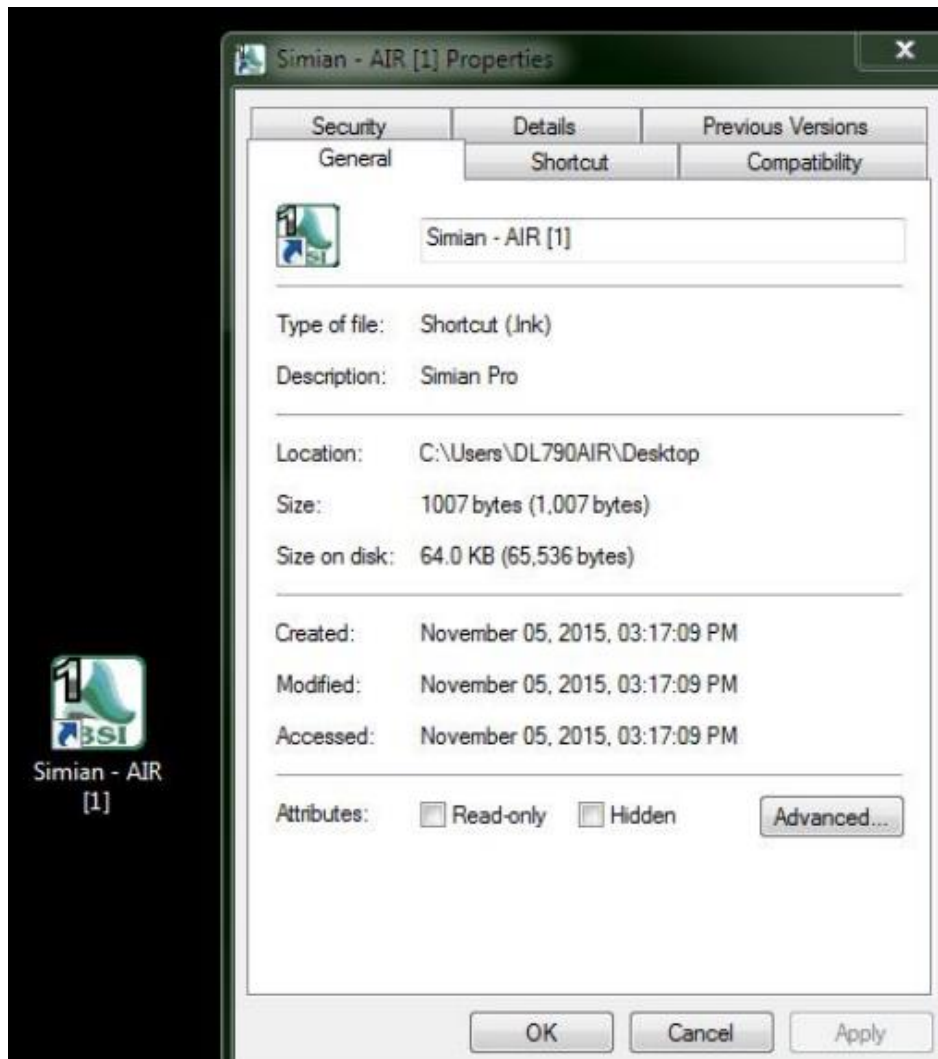
First start with creating the Simian shortcut to Air mode in session 1:

- Right click on the Simian desktop shortcut and choose
- Copy Right click in in an empty space on the desktop and choose
- Paste On the new Simian copy shortcut, right click it and choose properties
- Select the Shortcut tab and in the Target field, enter:

`C:\BSI32\Simian.exe /AIR /session:1`

- Click the Change Icon button and select the icon with a "1" on it.
- Select the General tab and in the top field, change the short label to "Simian AIR [1]" or Simian Stream"
- Click Apply and OK at the bottom





For a second Air mode shortcut to session 2:

- Right click on the Simian desktop shortcut and choose Copy
- Right click in an empty space on the desktop and choose Paste
- On the new Simian copy shortcut, right click it and choose properties
- Select the Shortcut tab and in the Target field, enter:

C:\BSI32\Simian.exe /AIR /session:2

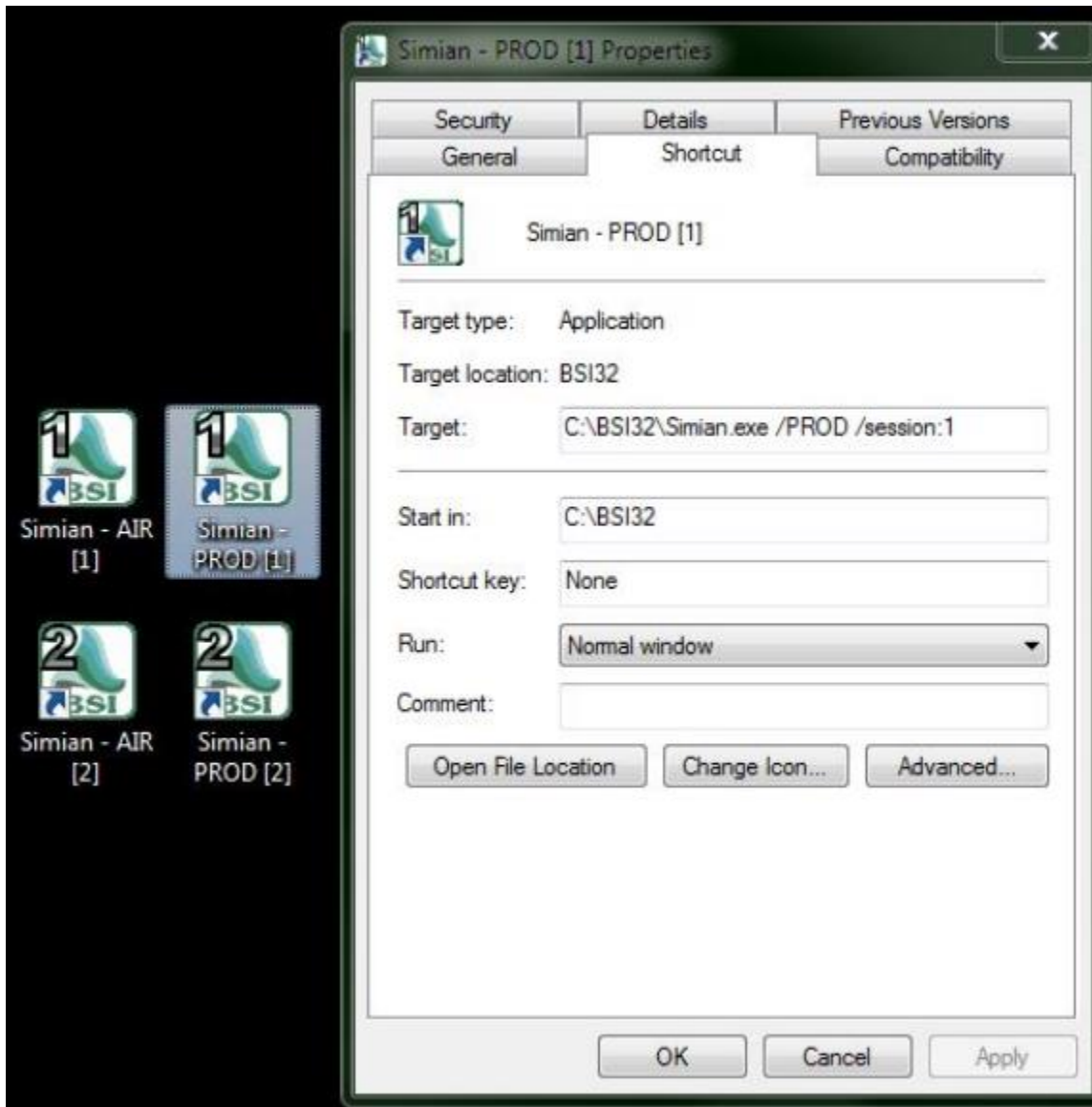
- Click the Change Icon button and select the icon with a "2" on it.
- Select the General tab and in the top field, change the short label to "Simian AIR [2]" or "Simian FM"
- Click Apply and OK at the bottom

Here are the instructions for making a production mode Simian shortcut into session 1:

- Right click on the Simian desktop shortcut and choose Copy
- Right click in an empty space on the desktop and choose Paste
- On the new Simian copy shortcut, right click it and choose properties
- Select the Shortcut tab and in the Target field, enter:

C:\BSI32\Simian.exe /PROD /session:1

- (If you would like to give the Simian Production a different icon, click the Change Icon button and select your preference)
- Select the General tab and in the top field, change the short label to: Simian PRODUCTION [1]
- Click Apply and OK at the bottom



Here are the instructions for making a production mode Simian shortcut into session 2:

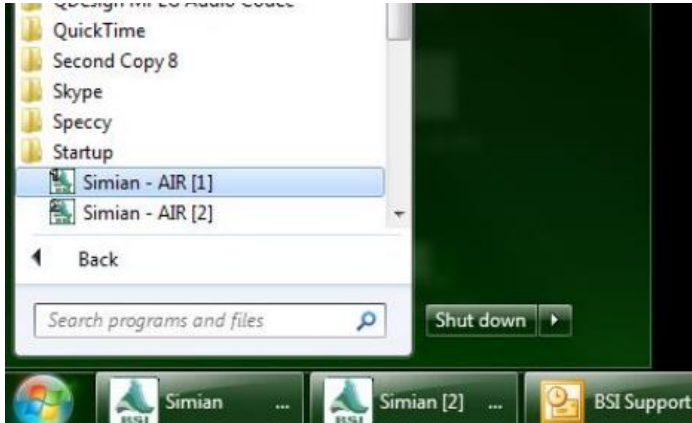
- Right click on the Simian desktop shortcut and choose Copy
- Right click in an empty space on the desktop and choose Paste
- On the new Simian copy shortcut, right click it and choose properties
- Select the Shortcut tab and in the Target field, enter:

C:\BSI32\Simian.exe /PROD /session:2

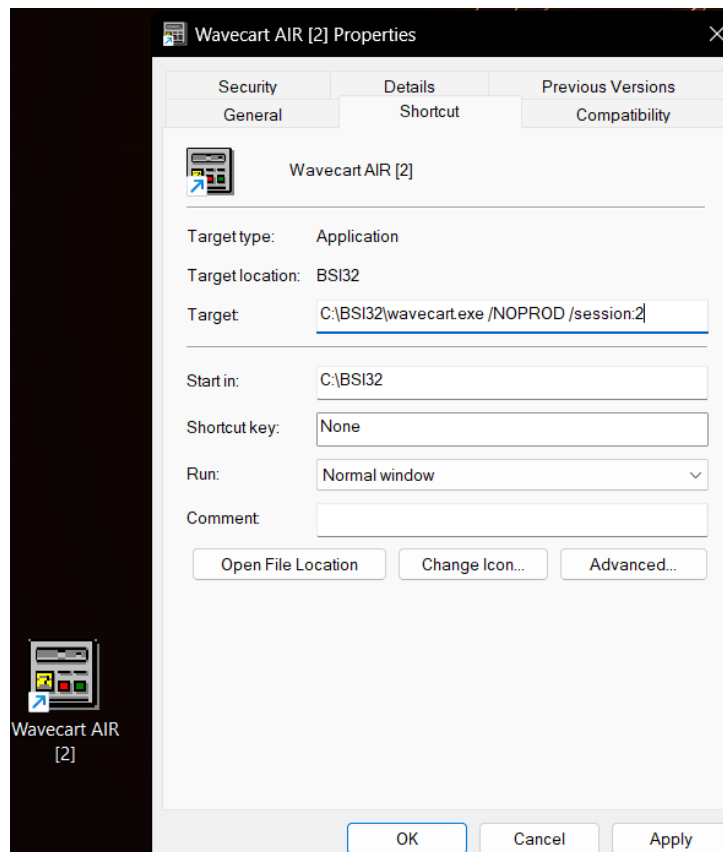
- (If you would like to give the Simian Production a different icon, click the Change Icon button and select your preference)
- Select the General tab and in the top field, change the short label to: Simian PRODUCTION [2]

- Click Apply and OK at the bottom

Remove the general Simian or Wavecart shortcut from the Windows Startup folder and add the two AIR mode shortcuts in there instead.

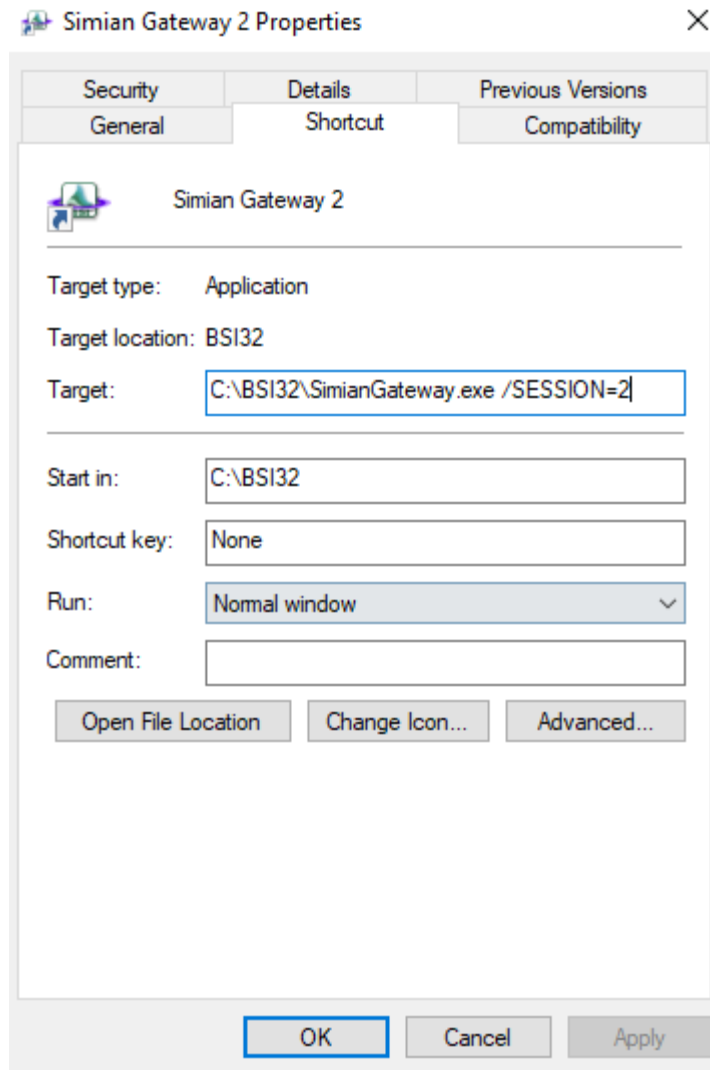


Please Wait! Please wait... it will take a second!



For Wavecart sessions capable of Air mode, you will need to follow a similar process to Simian, except the information in the Target field will need to be different. Wavecart is designed to open all other sessions besides the first session in a production mode unless specifically told not to. The information in the target field of your new “AIR” session shortcut should appear as follows:

C:\BSI32\Wavecart.exe /NOPROD /session:2



For Simian Gateway multi-instance mode, you will need to follow a similar process to what is mentioned above, but it only needs the specific session number in the target field after the listed file path. It also differs in syntax as you will need to use “/SESSION=” to indicate the session number. The information in the target field of your new Simian Gateway session should be:

C:\BSI32\SimianGateway /SESSION=2

Last updated Wed, NOV 13 2024 02:13 pm